

WAGNER NEW PLAY FESTIVAL 2022

FIFTY BOXES OF EARTH

&

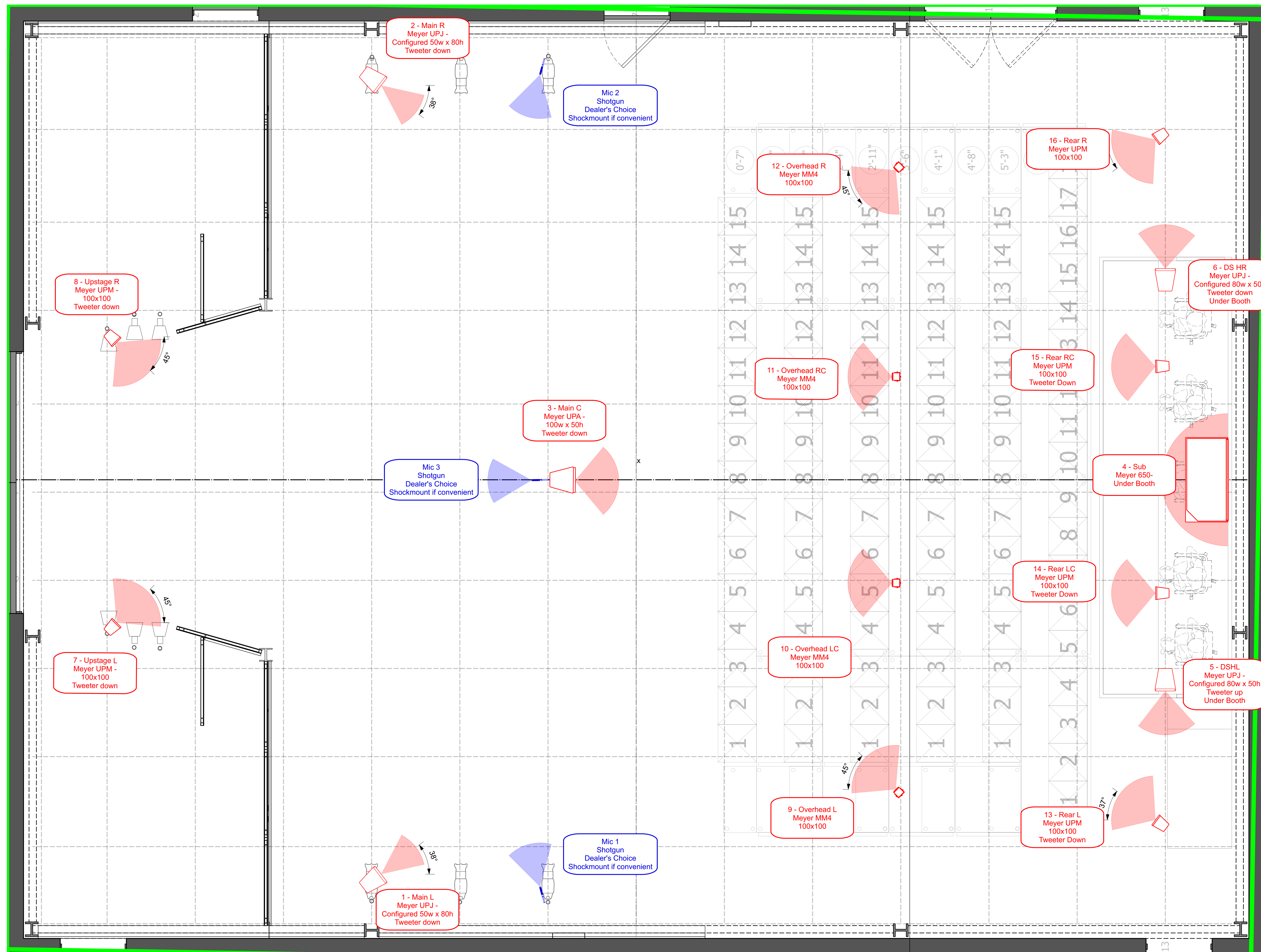
LIMP WRIST ON THE LEVER

UCSD THEODORE AND ADELE SHANK THEATRE

DIRECTOR	CAMBRIA HERRERA & ROSIE GLEN - LAMBERT
SET	RAPHAEL MISHLER
LIGHTS	SHELBY THACH
SOUND	ETHAN ELDRED
COSTUMES	EUYIHYUN SONG / ZOE TRAUTMANN

PAGE :

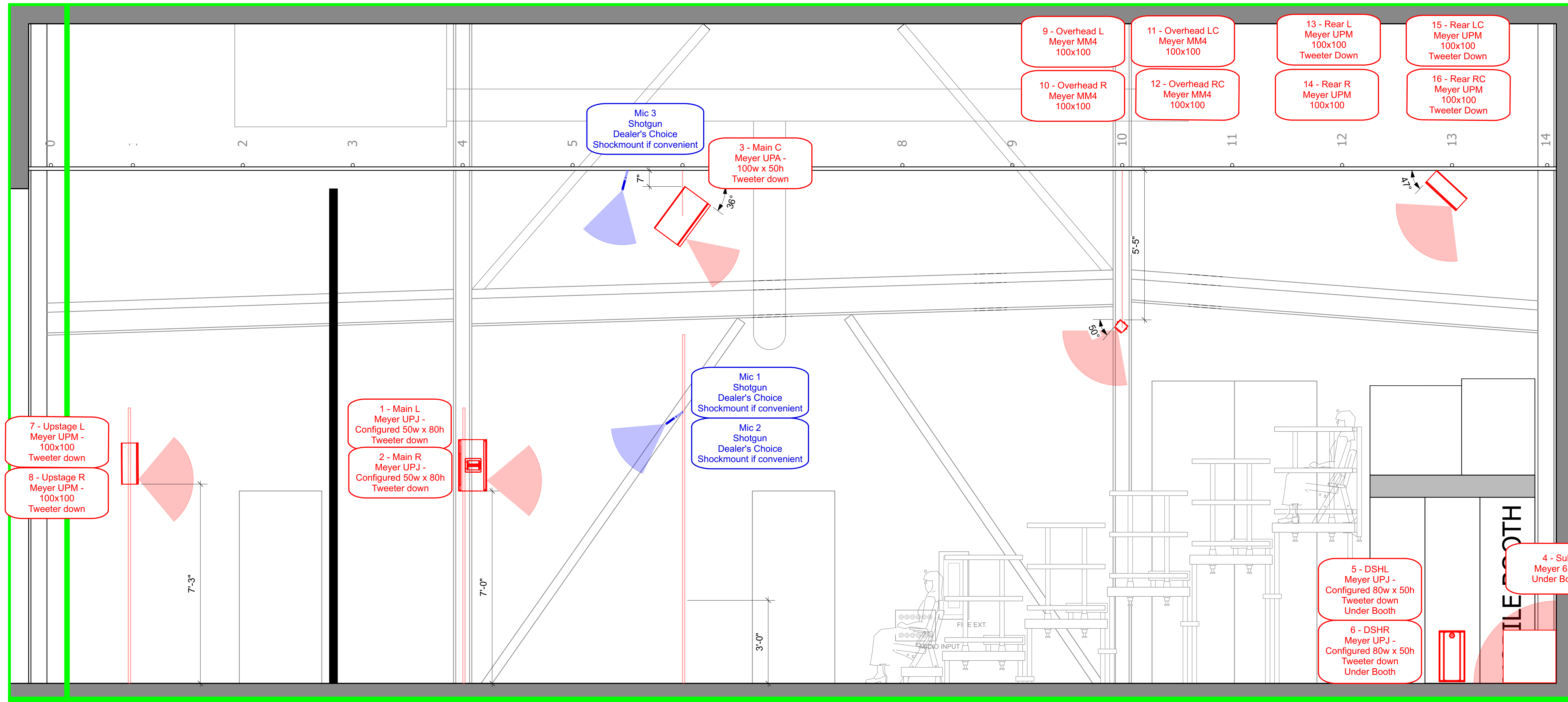
OF



1 Sound Groundplan
Scale: 1/2" = 1'-0"

CHANGE LOG/NOTES:
 ALL OVER HOUSE SPEAKER POSITIONS FINALIZED
 SPEAKERS 13-16 MOVED UP TO PIPE GRID ON 13
 CUT SPEAKERS FROM BOOM 1 L/R
 MOVE THOSE TO DS HL/R (UNDER RISERS ON FLOOR)
 THESE MAY BE ANOTHER APPROPRIATE PASSIVE
 OR POWERED SPEAKER MODEL TO AID INSTALL AS NEEDED.
 SPEAKERS ON BOOM 2 ARE NOW "MAIN L/R"
 HEIGHT 7' TO BOTTOM OF SPEAKER
 (ALL SPEAKERS RE-NUMBERED ACCORDING TO CHANGESx)

Production Title		Limp Wrist on the Lever and Fifty Boxes of Earth	
Drawing Title		Sound GP	
Designer	Ethan Eldred	Director	Cambria Herrera Rosie Glen-Lambert
Drawn By	EE	Scale	As noted
Venue	UCSD Shank Theatre	Drawing No.	2
Date	4/4/22	Revision	of 3



1 Sound Section
Scale: 1/2" = 1'-0"

SOUND I/O List:

Console Input Channels:

Output Channels:

(1-24 reflect QLab Cue Outputs)
(19-24 are for applying console FX to QLab playback)

(1-16 reflect speaker list)
(17-18 go to EASY DIGI for radio transmit)

- 1 - Main L
- 2 - Main R
- 3 - Main C
- 4 - Sub
- 5 - Downstage HL
- 6 - Downstage HR
- 7 - Upstage HL
- 8 - Upstage HR
- 9 - Surround Down HL
- 10 - Surround Down HR
- 11 - Surround Mid HL
- 12 - Surround Mid HR
- 13 - Rear HL
- 14 - Rear HR
- 15 - Rear HLC
- 16 - Rear HRC
- 17 - Walkie Talkie 1
- 18 - Walkie Talkie 2
- 19 - FX 1L
- 20 - FX 1R
- 21 - FX 2L
- 22 - FX 2R
- 23 - FX 3L
- 24 - FX 3R
- 25 - Shotgun Mic HL
- 26 - Shotgun Mic HR
- 27 - Shotgun Mic Grid

- 1 - Main L
- 2 - Main R
- 3 - Main C
- 4 - Sub
- 5 - Downstage HL
- 6 - Downstage HR
- 7 - Upstage HL
- 8 - Upstage HR
- 9 - Overhead L
- 10 - Overhead R
- 11 - Overhead CL
- 12 - Overhead CR
- 13 - Rear L
- 14 - Rear R
- 15 - Rear CL
- 16 - Rear CR
- 17 - Walkie Talkie 1 (via Easy Digi Vox interface)*
- 18 - Walkie Talkie 2 (via Digi Vox interface)*

*Easy Digi Vox interface available here: <https://www.ebay.com/itm/221381229369>
Easy Digi Vox interface transforms line level output from sound console to mic level appropriate for 2-way radios.

SPEAKER LIST:

- Model - Purpose

- 1 - Meyer UPJ-1p - Main L
- 2 - Meyer UPJ-1p - Main R
- 3 - Meyer UPA-1p - Main C
- 4 - Meyer 650p - Sub
- 5 - Meyer UPJ-1p - Downstage House L
- 6 - Meyer UPJ-1p - Downstage Houses R
- 7 - Meyer UPM-1p - Upstage House L
- 8 - Meyer UPM-1p - Upstage House R
- 9 - Meyer MM4 - Overhead L
- 10 - Meyer MM4 - Overhead R
- 11 - Meyer MM4 - Overhead LC
- 12 - Meyer MM4 - Overhead RC
- 13 - Meyer UPM-1p - Rear L
- 14 - Meyer UPM-1p - Rear R
- 15 - Meyer UPM-1p - Rear LC
- 16 - Meyer UPM-1p - Rear RC
- 17 - Walkie Talkie 1
- 18 - Walkie Talkie 2 (backup, hold purchase until tests)

SOUND SYSTEM NOTES:

SIGNAL LINEPLOT PENDING, PLEASE REFER TO I/O LIST IN THE MEANTIME

Mixing/Processing -

- Mixing console: DiGiCo. Patch I/O in order by attached list if possible.

Microphones -

- Area microphones to be used for ambience effects as well as archival recording, not intended for text reinforcement.

Rigging -

- Where possible, speakers upstage of the plaster line (except for 3-Main C) are preferred to be mounted on the lighting booms to minimize visible tail-down hardware. Please advise if this is not feasible.
- Speakers over house and Center speaker may tail down from grid.

Wireless speakers / props -

For *Limp Wrist on the Lever*:
- Stun gun: this will be an actor-triggered device being built by prop shop, and loaded with a sound from SD.
- Walkie-talkies: Design conversations in process pending further conversations. Will likely use two console output lines as noted in I/O list.

Computer -

- Appropriate Sound Mac, separate from Video
- Please install QLab (Sound License), and appropriate preparations per QLab's documentation, as applicable: <https://qlab.app/docs/v4/general/preparing-your-mac/>

Networking -

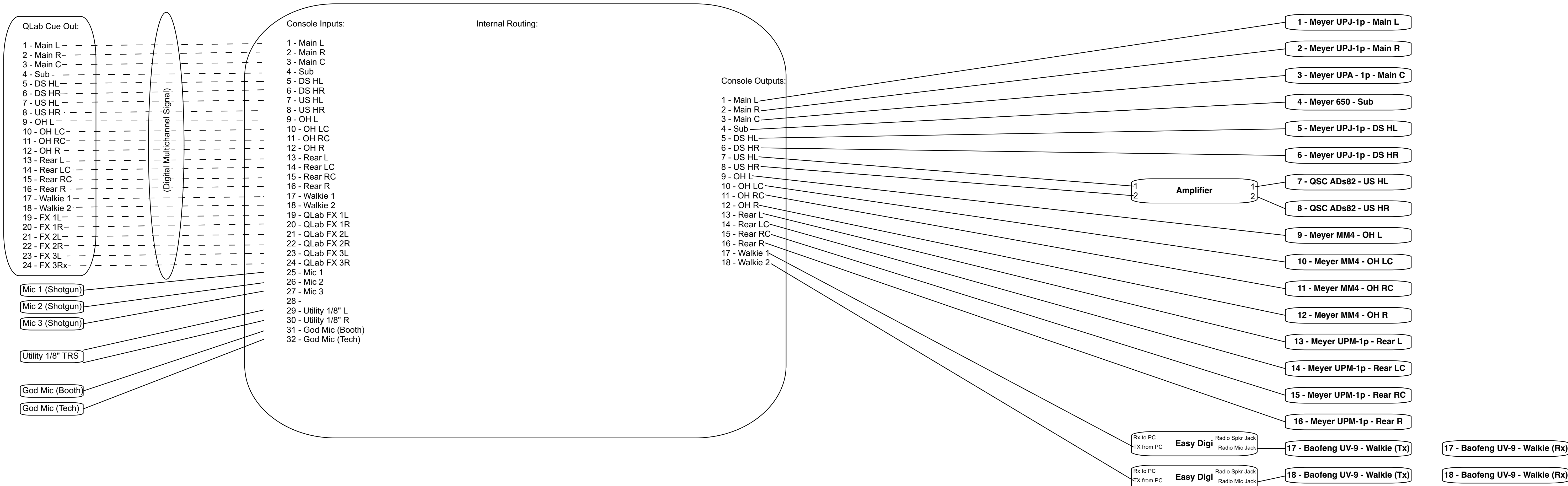
- IP Network for OSC and Screenshare to include:
- Wired/Ethernet: sound and video computers, sound console, **lighting console**, projector for control server, tech table for designer screenshare/console remote.
- If possible, please include a wifi router with access for mobile designer console remote/QLab remote. Designer can also provide this via tech table connection.

CHANGE LOG/NOTES:

- ALL OVER HOUSE SPEAKER POSITIONS FINALIZED
SPEAKERS 13-16 MOVED UP TO PIPE GRID ON 13
- CUT SPEAKERS FROM BOOM 1 L/R
MOVE THOSE TO DS HL/R (UNDER RISERS ON FLOOR)
THESE MAY BE ANOTHER APPROPRIATE PASSIVE OR POWERED SPEAKER MODEL TO AID INSTALL AS NEEDED.
- SPEAKERS ON BOOM 2 ARE NOW "MAIN L/R"
HEIGHT 7' TO BOTTOM OF SPEAKER
- (ALL SPEAKERS RE-NUMBERED ACCORDING TO CHANGES)

Production Title		Limp Wrist on the Lever and Fifty Boxes of Earth	
Drawing Title		Sound Section	
Designer	Ethan Eldred	Director	Cambria Herrera
Drawn By	EE	Scale	As noted
Venue	UCSD Shank Theatre	Drawing No.	3
Date	4/4/22	Revision	of 3

Input Sources



SOUND I/O List:

Console Input Channels:

(1-24 reflect QLab Cue Outputs)
(19-24 are for applying console FX to QLab playback)

- 1 - Main L
- 2 - Main R
- 3 - Main C
- 4 - Sub
- 5 - Downstage HL
- 6 - Downstage HR
- 7 - Upstage HL
- 8 - Upstage HR
- 9 - Surround Down HL
- 10 - Surround Down HR
- 11 - Surround Mid HL
- 12 - Surround Mid HR
- 13 - Rear HL
- 14 - Rear HR
- 15 - Rear HLC
- 16 - Rear HRC
- 17 - Walkie Talkie 1
- 18 - Walkie Talkie 2
- 19 - FX 1L
- 20 - FX 1R
- 21 - FX 2L
- 22 - FX 2R
- 23 - FX 3L
- 24 - FX 3R
- 25 - Shotgun Mic HL
- 26 - Shotgun Mic HR
- 27 - Shotgun Mic Grid

Output Channels:

(1-16 reflect speaker list)
(17-18 go to EASY DIGI for radio transmit)

- 1 - Main L
- 2 - Main R
- 3 - Main C
- 4 - Sub
- 5 - Downstage HL
- 6 - Downstage HR
- 7 - Upstage HL
- 8 - Upstage HR
- 9 - Overhead L
- 10 - Overhead R
- 11 - Overhead CL
- 12 - Overhead CR
- 13 - Rear L
- 14 - Rear R
- 15 - Rear CL
- 16 - Rear CR
- 17 - Walkie Talkie 1 (via Easy Digi Vox interface)*
- 18 - Walkie Talkie 2 (via Digi Vox interface)*

*Easy Digi Vox interface available here: <https://www.ebay.com/itm/221381229369>
Easy Digi Vox interface transforms line level output from sound console to mic level appropriate for 2-way radios.

2 Sound Signal Flow
Scale: 1/2" = 1'-0"

SOUND SYSTEM NOTES:

SIGNAL LINEPLOT PENDING, PLEASE REFER TO I/O LIST IN THE MEANTIME

Mixing/Processing -

- Mixing console: DiGiCo. Patch I/O in order by attached list if possible.

Microphones -

- Area microphones to be used for ambience effects as well as archival recording, not intended for text reinforcement.

Rigging -

- Where possible, speakers upstage of the plaster line (except for 3-Main C) are preferred to be mounted on the lighting booms to minimize visible tail-down hardware. Please advise if this is not feasible.
- Speakers over house and Center speaker may tail down from grid.

Wireless speakers / props -

For *Limp Wrist on the Lever*:

- Stun gun: this will be an actor-triggered device being built by prop shop, and loaded with a sound from SD.
- Walkie-talkies: Design conversations in process pending further conversations. Will likely use two console output lines as noted in I/O list.

Computer -

- Appropriate Sound Mac, separate from Video
- Please install QLab (Sound License), and appropriate preparations per QLab's documentation, as applicable: <https://qlab.app/docs/v4/general/preparing-your-mac/>

Networking -

- IP Network for OSC and Screenshare to include:
- Wired/Ethernet: sound and video computers, sound console, **lighting console**, projector for control server, tech table for designer screenshare/console remote.
- If possible, please include a wifi router with access for mobile designer console remote/QLab remote. Designer can also provide this via tech table connection.

CHANGE LOG/NOTES:

ALL OVER HOUSE SPEAKER POSITIONS FINALIZED
SPEAKERS 13-16 MOVED UP TO PIPE GRID ON 13

CUT SPEAKERS FROM BOOM 1 L/R
MOVE THOSE TO DS HL/R (UNDER RISERS ON FLOOR)
THESE MAY BE ANOTHER APPROPRIATE PASSIVE OR POWERED SPEAKER MODEL TO AID INSTALL AS NEEDED.

SPEAKERS ON BOOM 2 ARE NOW "MAIN L/R"
HEIGHT 7' TO BOTTOM OF SPEAKER

(ALL SPEAKERS RE-NUMBERED ACCORDING TO CHANGES)

Production Title		Limp Wrist on the Lever and Fifty Boxes of Earth	
Signal Flow		Signal Flow	
signed by	Ethan Eldred	Director	Cambria Herrera Rosie Glen-Lambert
written by	EE	Scale	As noted
date	4/4/22	Drawing No.	4 of 3
revision			